

5 RED FLAGS

MOST Timber Suppliers
WON'T Tell You

(...that every RESIDENTIAL ARCHITECT should know...)



BONUS CHAPTER INSIDE!

TIMBER FIRE SAFETY UNCOVERED

Delve into the **hidden pitfalls of the timber industry** that can compromise the integrity of high-end residential architecture.

This guide exposes the critical warning signs that premium timber suppliers may not disclose, equipping architects with the knowledge to make informed decisions for their luxury projects.



CONTENTS

Bonus Chapter

#1

CHAPTER 1

Timber Fire Safety Uncovered

Exploring the complexities and nuances of timber's reaction to fire, demystifying the new EU standardised fire classification, and its implications for high-end residential architecture.

#2

CHAPTER 2

The Cover-Up of Quality

Identifying the subtle indications of compromised timber quality that can affect the longevity and aesthetics of high-end residential buildings.

#3

CHAPTER 3

Sustainability Smokescreens

Deciphering the truth behind "green" labels and uncovering how some suppliers mask unsustainable practices.

#4

CHAPTER 4

The Hidden Costs of Cheap Bidding

Understanding the long-term financial implications of initially attractive but potentially inferior timber supplies.

#5

CHAPTER 5

Certifications and What They Don't Tell You

Interpreting certifications critically—learning what they guarantee and what remains unchecked.

#6

CHAPTER 6

The Innovation Illusion

Evaluating the claims of innovative products and ensuring they live up to the high standards required for premium architectural projects.

INTRODUCTION

The Veiled Truth in Timber Procurement

In the world of high-end residential architecture, the materials you choose are just as crucial as the design itself.

Timber, with its natural warmth and structural integrity, is a favoured material for crafting the bones of luxury homes that stand the test of time.

However, beneath the polished surface of timber samples and supplier brochures lies a complex industry where not all products are created equal.

As an architect, your reputation hinges on the quality and sustainability of every material you specify.

It's essential to be vigilant, looking beyond the grain to see potential issues that could undermine your project's success and your client's satisfaction.



This guide sets the stage for a journey into the less visible aspects of timber procurement.



You'll learn how to spot the **red flags** that might be hiding in plain sight, ensuring that your high-end residential projects not only look the part but are built to last, with ethical sourcing and environmental consciousness at their core.

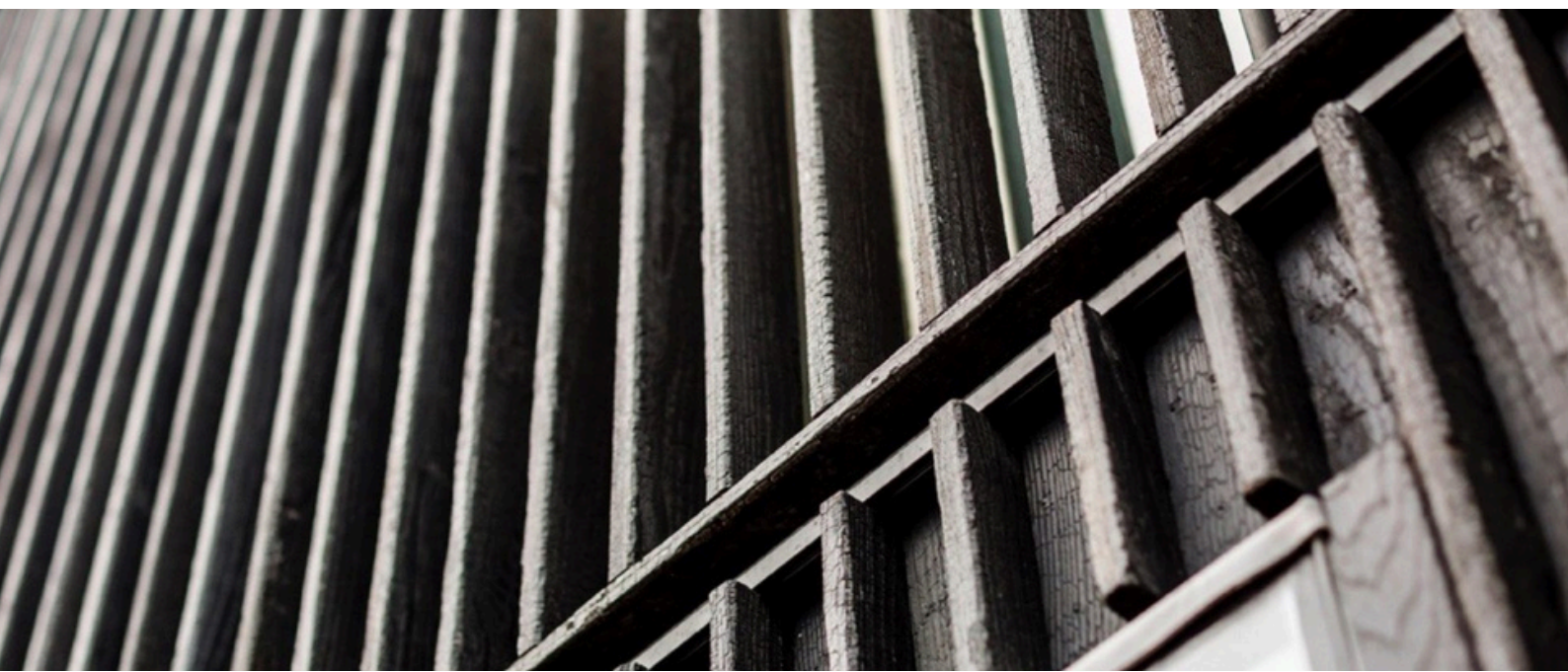


We will walk you through **the five critical warning signs** that timber suppliers might not voluntarily disclose.



From **the true meaning of quality and sustainability to the implications of cost-cutting measures**, you'll be equipped with the knowledge to make choices that align with the luxury and longevity your clients expect.

Prepare to peel back the layers of the timber industry and gain the insight needed to make informed decisions, ensuring that your architectural masterpieces are not just visually stunning but also ethically sound and built to endure.



CHAPTER 1

Timber Fire Safety Uncovered

In the realm of high-end residential architecture, fire safety is not a luxury but a necessity.

Yet, navigating the labyrinth of timber fire ratings can be a daunting task. Architects must become detectives, deciphering the truth behind the classifications and standards.

Until recently, different countries within the EU employed varying methods for testing and classifying the performance of timbers' reaction to fire.

This required manufacturers to undertake multiple tests to meet the requirements of each country.

However, the introduction of a unified classification system across EU member states, including the UK, now allows manufacturers and the construction industry to use a common method for comparing the Reaction to Fire performance of construction products.

This standardisation is achieved through **EN 13501-1**, which determines fire classification levels ranging from A1 to F for insulation products used in wall and ceiling construction.



Types of Fire Rating:

The British Standard (BS) EN 13501-1 classification comprises three ratings:

Euro class rating:

Classification relating to smoke emission during combustion

Classification relating to the production of flaming droplets during combustion

These classifications are ranked from highest to lowest performance.

Class 0 and Class 1 Ratings:

Class 0 and Class 1 fire ratings do not indicate the combustibility of a product but refer solely to surface fire performance characteristics:

Class 0 is defined in Approved Document B of the Building Regulations 1991 and combines two tests from BS476:

BS476-6: Assesses the contribution of a surface to fire propagation.

BS476-7: Assesses the spread of flames across a surface, including distance and time.

Class 1 is a limited classification based on the test in BS476-7.

Combustible Construction Materials and Grenfell:

Since the Grenfell Tower fire, building standards have been under constant review and scrutiny. Although Grenfell Tower was not clad with timber, and no timber was involved in the fire, the Government has a strong desire to regulate materials more strictly.

The regulations and guidance in England's Approved Document B aim to address and control the risks of combustible building materials, including timber.

CHAPTER 2

The Cover-Up of Quality

Quality is the cornerstone of **premium architecture**.

Yet, in the pursuit of exquisite homes, the truth about timber quality often gets obscured. Suppliers may tout their wood as top-tier, but the reality may not always match the claim.

Architects need to become sleuths, examining the timber beyond its polished exterior.

Look for uniformity in colour and grain, indicators of maturity and treatment. Inconsistencies reveal shortcuts in drying or lower-grade lumber.

Not all imperfections are visible to the naked eye.

Internal stresses, undetectable at first glance, can lead to warping or splitting.

Advanced methods like x-ray scanning uncover these flaws, but few suppliers offer such transparency.

High-end timber should withstand the elements, resisting moisture and decay. Cheaper alternatives may initially look the part but deteriorate quickly when exposed to nature's tests.

Architects must demand evidence of quality, not just in words, but in verifiable processes and outcomes.

Reliable suppliers will have this information readily available and be proud to share it.

Remember, the beauty of a luxury home is more than skin deep. It's the integrity and longevity of the materials that truly define its luxury.



CHAPTER 3

Sustainability Smokescreens

Architects designing luxury homes are often drawn to the allure of 'green' timber, but the sustainability claims by suppliers can sometimes be a facade.

Eco-friendly labels are widespread, yet they vary significantly in their criteria and impact. It's crucial to understand what each certification entails and which aspects of sustainability they address.

Some may cover the responsible management of forests, while others focus on the carbon footprint of transportation or the social impact on communities involved in timber production.

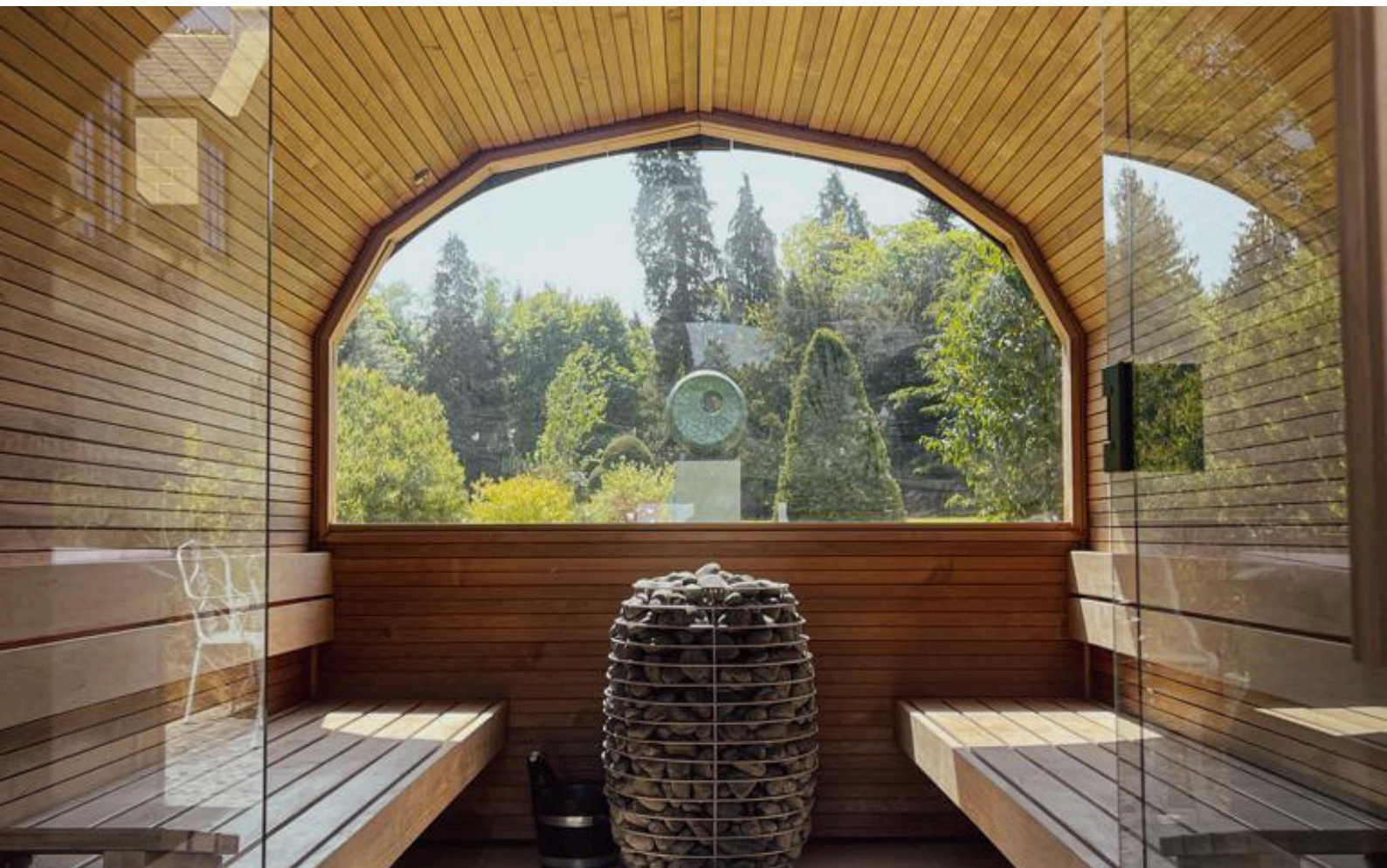
Beware of vague or broad claims of sustainability that aren't backed by recognised certifications.

It's easy for suppliers to use terms like '**eco-conscious**' or '**planet-friendly**' without substantive action behind them.

This practice, known as 'greenwashing,' can mislead architects into believing they are making environmentally sound choices when, in fact, they are not.

True sustainability encompasses the entire lifecycle of timber—from growth and harvesting to processing and disposal. It considers biodiversity, ecosystem health, and renewability.

As an architect, it's your responsibility to probe deeper, asking for specific details about the timber's journey before it reaches the construction site.



Inquiring about the source of the timber is a start.



Is it from a well-managed forest?



Are the methods of harvesting designed to minimise waste and ensure regeneration?



What about the milling processes—are they energy-efficient and do they minimise chemical use?

Architects should also consider the end-of-life aspect of timber.



How will it behave once its service in a building is complete?



Can it be recycled or will it end up in a landfill?

Premium timber should ideally offer options for reuse or safe, biodegradable disposal.

By understanding the nuances of sustainability and demanding clear, certified evidence from suppliers, you ensure that the luxury homes you design are not only beautiful and durable but also truly kind to the planet.

This level of diligence sets a precedent for ethical architecture and helps to build a legacy that future generations can admire and emulate.

CHAPTER 4

The Hidden Costs of Cheap Bidding

When it comes to high-end residential architecture, the initial cost of materials can be deceiving.

In the competitive world of timber supply, low bids might catch your attention, but they often hide the true expense you'll pay over time.

Cheap timber might mean that the supplier has cut corners, which can lead to increased costs down the road.

Substandard wood is prone to defects like warping, cracking, or rot, which can necessitate costly repairs or replacements much sooner than anticipated.

Moreover, low-cost timber can carry hidden environmental and ethical expenses. The price might not reflect the true cost of responsible sourcing, fair labour practices, or environmental protection.

By choosing a supplier based solely on price, you might inadvertently support harmful practices that can damage your reputation and that of your clients.

The longevity of the materials you choose directly impacts the lifecycle cost of a building.

Premium timber, while more expensive upfront, is an investment in durability and quality.





It minimises the need for maintenance and ensures that the building ages gracefully, maintaining its value and appeal over time.

Insurance costs can also be affected by the quality of materials.

High-end timber that is fire-resistant and less likely to succumb to pests can lower insurance premiums, providing long-term financial benefits to the property owner.

When evaluating bids, it's essential to consider ALL these factors.

Look beyond the sticker price and assess the full spectrum of costs associated with the timber you select.

By doing so, you ensure that the premium homes you design are not only aesthetically pleasing but also economically sound in the long run.

As architects, your role extends beyond design; it involves guiding clients toward making choices that are wise not just for today, but for decades to come.

CHAPTER 5

Certifications and What They Don't Tell You

Timber certifications are intended to assure architects and clients of the wood's quality and sustainability.

However, the presence of a certification is not a blanket guarantee.

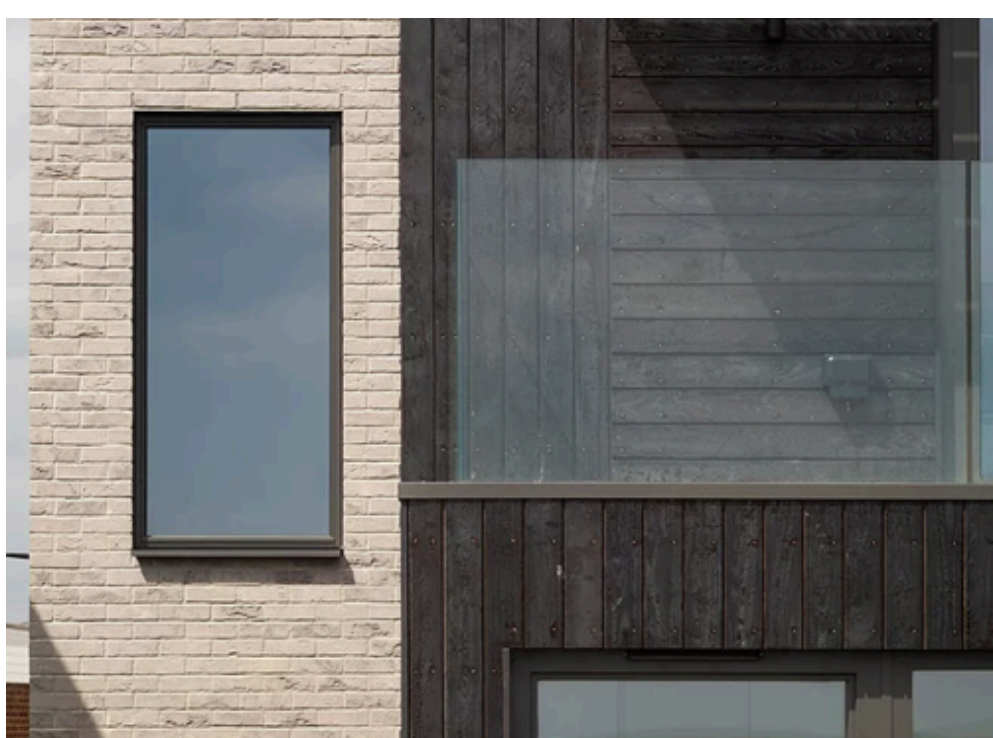
It's vital to understand the scope of what these certifications cover and, perhaps more importantly, what they don't.

Many certifications focus on forest management and the **legality of the timber trade.**

They ensure that the wood comes from a source that is managed responsibly and that the trade complies with international laws.

But these certifications might not address the manufacturing processes, the carbon footprint of transportation, or the social impact on the workers and local communities.





Even when a certification does cover a comprehensive range of sustainability issues, it's worth investigating the **standards and enforcement practices behind it.**



Are the certifying bodies conducting thorough, independent audits?



Are they transparent about their findings and methodologies?

Furthermore, certifications often fail to convey the full story of a piece of timber's journey.



For example, a certification might attest to the sustainable harvesting of the wood, but what about the chemicals used in its treatment?



Are there any toxic substances that could off-gas into the homes you design, affecting indoor air quality and resident health?

It's also crucial to recognise that some certifications are more rigorous than others. Look for those with a reputation for strict standards and regular, independent verification processes.

Don't hesitate to ask suppliers for detailed information about the certifications they tout and to do your own research on their credibility.

In essence, while certifications can be a helpful starting point, they **should NOT be the sole basis for your timber selection.**

As an architect, you have the power—and responsibility—to demand more information and greater transparency, ensuring that the materials you use truly align with the values of quality, sustainability, and ethical responsibility that define premium architecture.



CHAPTER 6

The Innovation Illusion

Innovation in the timber industry often heralds the arrival of new products promising better performance and aesthetic appeal.

However, not all innovations live up to their claims. It is crucial for architects to discern genuine advancements from marketing ploys.

Cutting-edge products like modified woods or composites boast enhanced durability, resistance to decay, and maintenance-free finishes.

These features are **attractive for luxury builds**, but the long-term implications and performance of these materials are not always known.

Architects must ask:

? Has the product stood the test of time, or is it too new to have a proven track record?

Suppliers might also promote their innovative products as environmentally superior.

? But what is the true environmental cost of producing these new materials?

? Are the processes energy-intensive, or do they involve chemicals that could harm the environment or human health?





The **allure of innovation** can also **overshadow traditional materials that have centuries of proven reliability.**

While it's important to embrace advancements that offer genuine benefits, it's equally important to respect the time-honoured materials that continue to perform well.

Architects should be sceptical of grand claims and seek out independent studies and reviews.

Real-world case studies, performance data, and feedback from professionals who have worked with the material can provide invaluable insights into its true capabilities.

Furthermore, consider the manufacturer's support and warranty.

An innovative product might seem promising, but without the backing of a solid warranty and responsive manufacturer support, it could become a liability.

As you explore innovative timber solutions for your high-end residential projects, let your guiding principle be evidence, not excitement.

By doing so, you ensure that the materials you select are not just novel, but truly superior and suitable for the premium homes you design.

Crafting Legacies with QTD

As we draw the final plank on the insights within the timber industry, **it's clear that the choice of timber supplier is as foundational as the designs you create.**

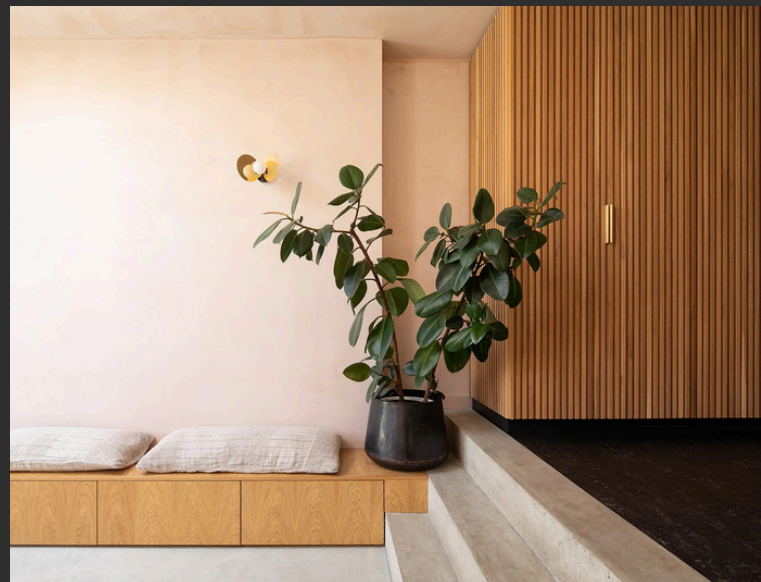
For architects accepting nothing less than the highest quality and sustainability, QTD Ltd constructs not just buildings, but legacies.

We pride ourselves on innovation and dedication to the craft of timber.

Our bespoke ThermoChar®, ThermoWood® and AtelierClad®, represent our commitment to excellence for high-end residential architecture.

Every product from our range meets your exacting standards. Our sustainable practices ensure we provide the best and most responsibly sourced timber.

We believe timber construction can testament environmental stewardship —this vision guides us.



We invite you to experience the QTD difference for yourself.

We are confident that once you have a sample of our premium timber in your hands, **you'll feel the quality that words can only begin to describe.**

It is an opportunity to see up-close the smooth profile boards and the rich textures that define our innovative products.

Choose QTD for your next project, and take advantage of our consultancy services to select the ideal materials that will bring your architectural vision to life.

Let us help you elevate your designs with timber solutions that embody beauty, durability, and a dedication to the planet.



**SCAN TO REQUEST A
SAMPLE FROM QTD TODAY**

and join us in shaping a world where every structure is a milestone in sustainable luxury.